

39th FAI
WORLD GLIDING
CHAMPIONSHIPS
TÁBOR I 2025



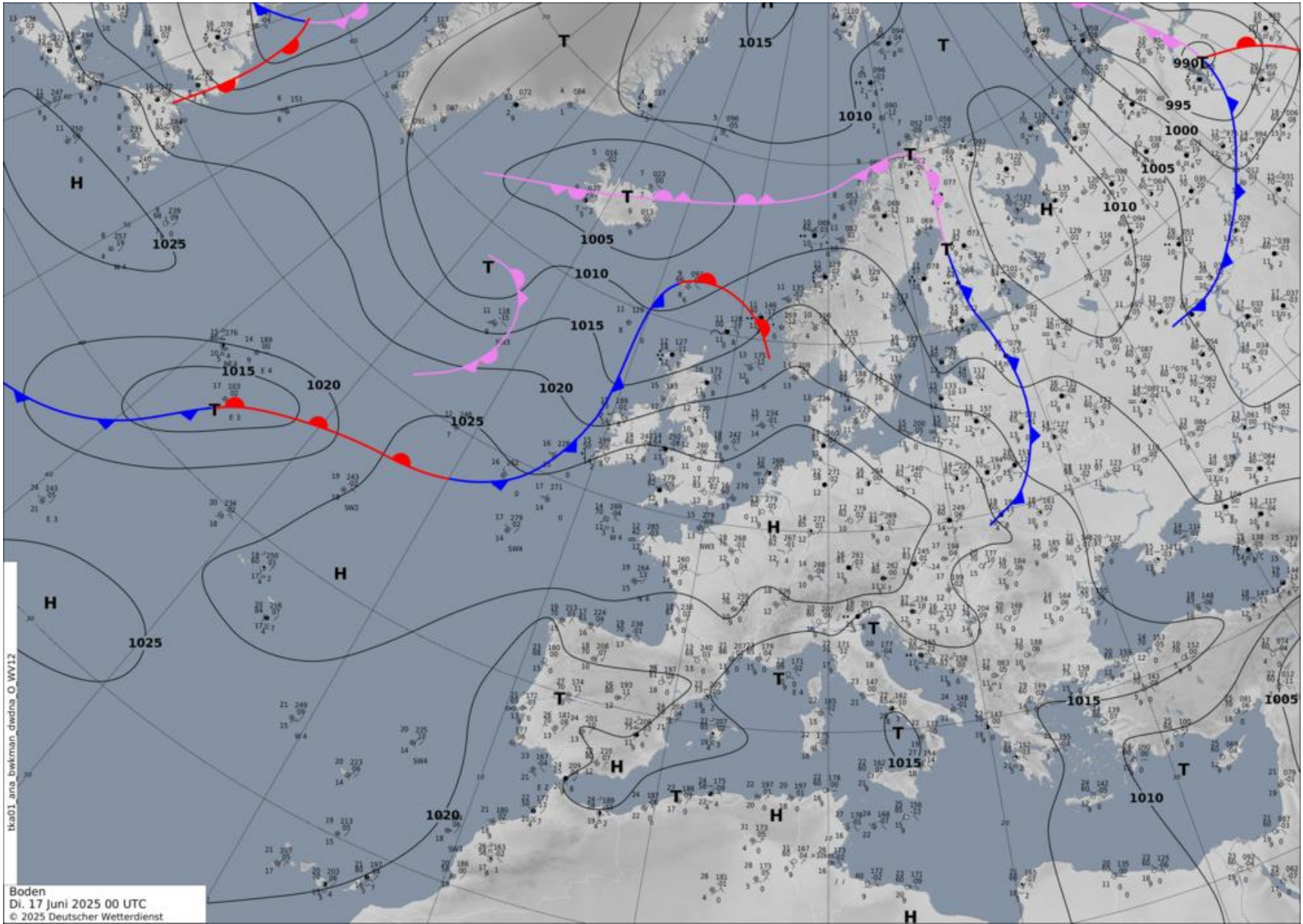
DAILY BRIEFING

COMPETITION DAY 8 – 17/06/2025

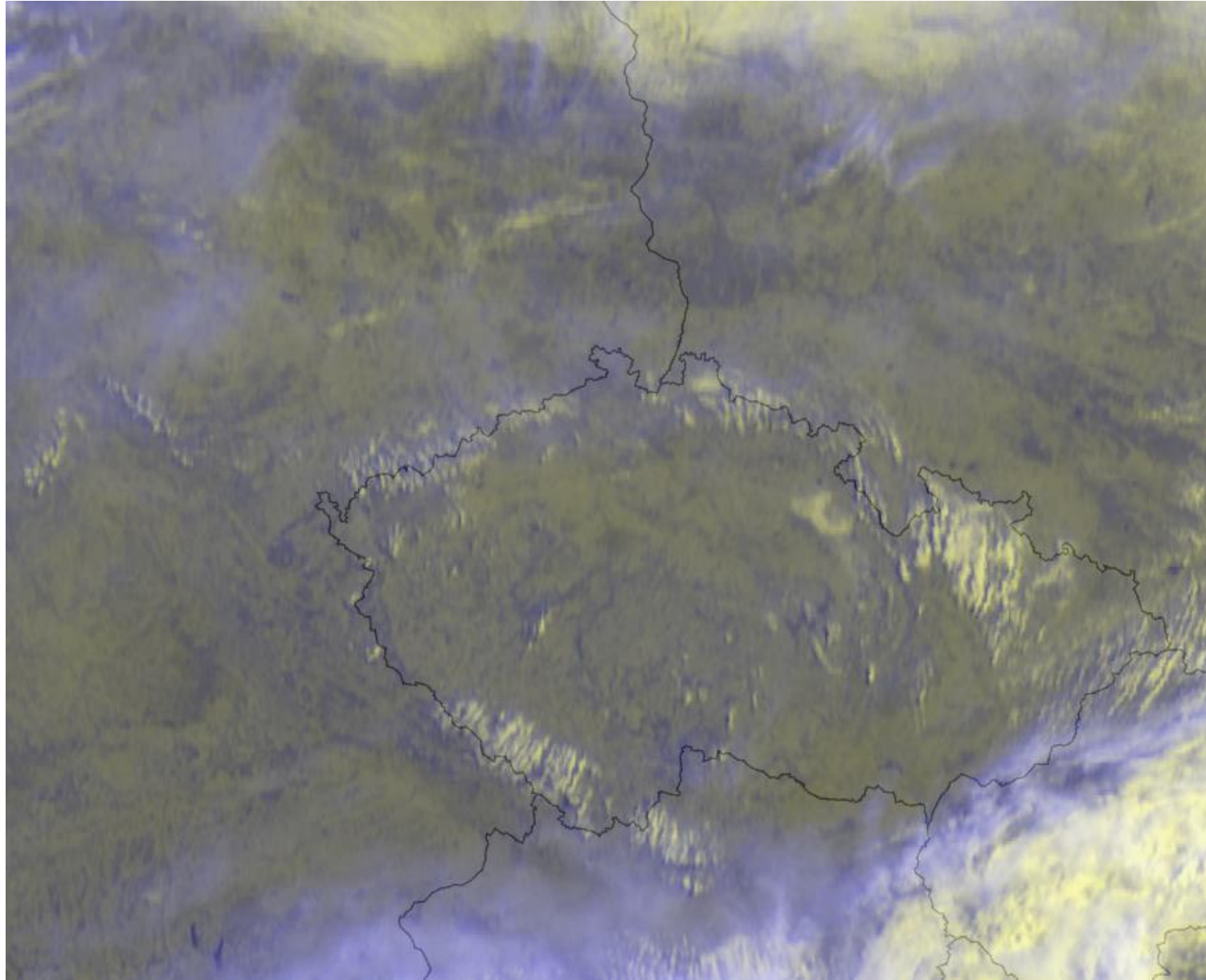
WEATHER



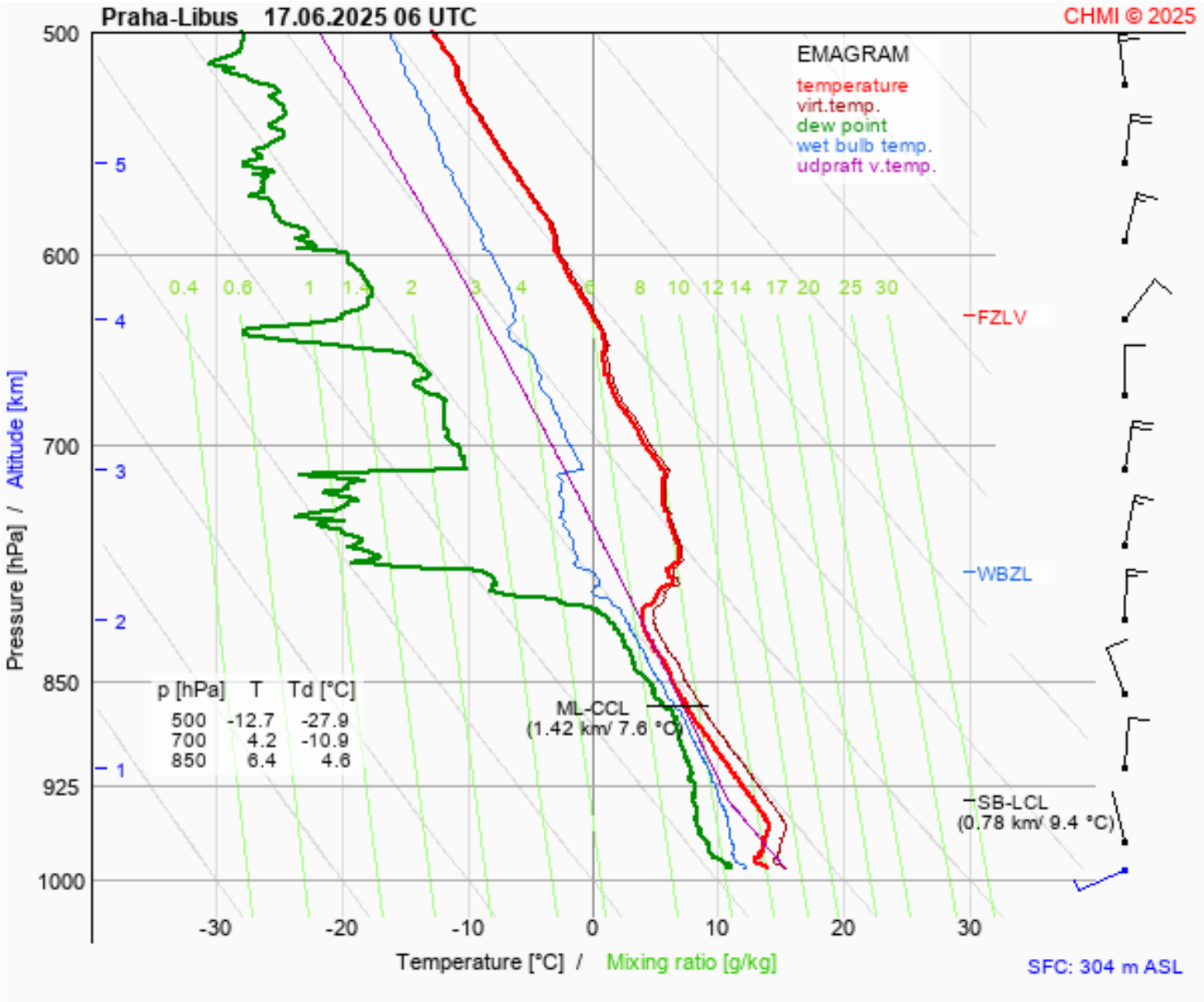
WEATHER



WEATHER



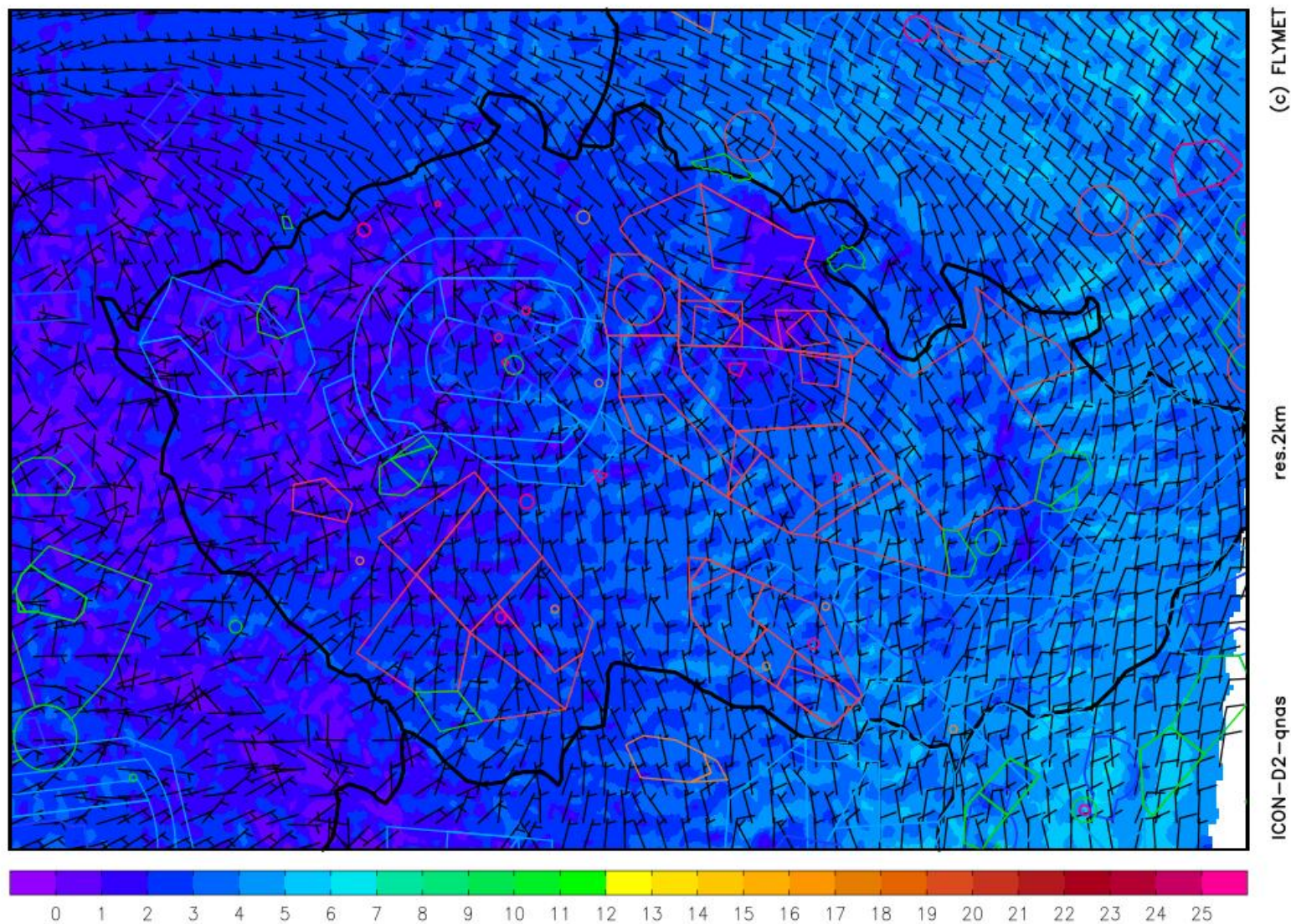
WEATHER



WEATHER

wind at 10m [m/s]

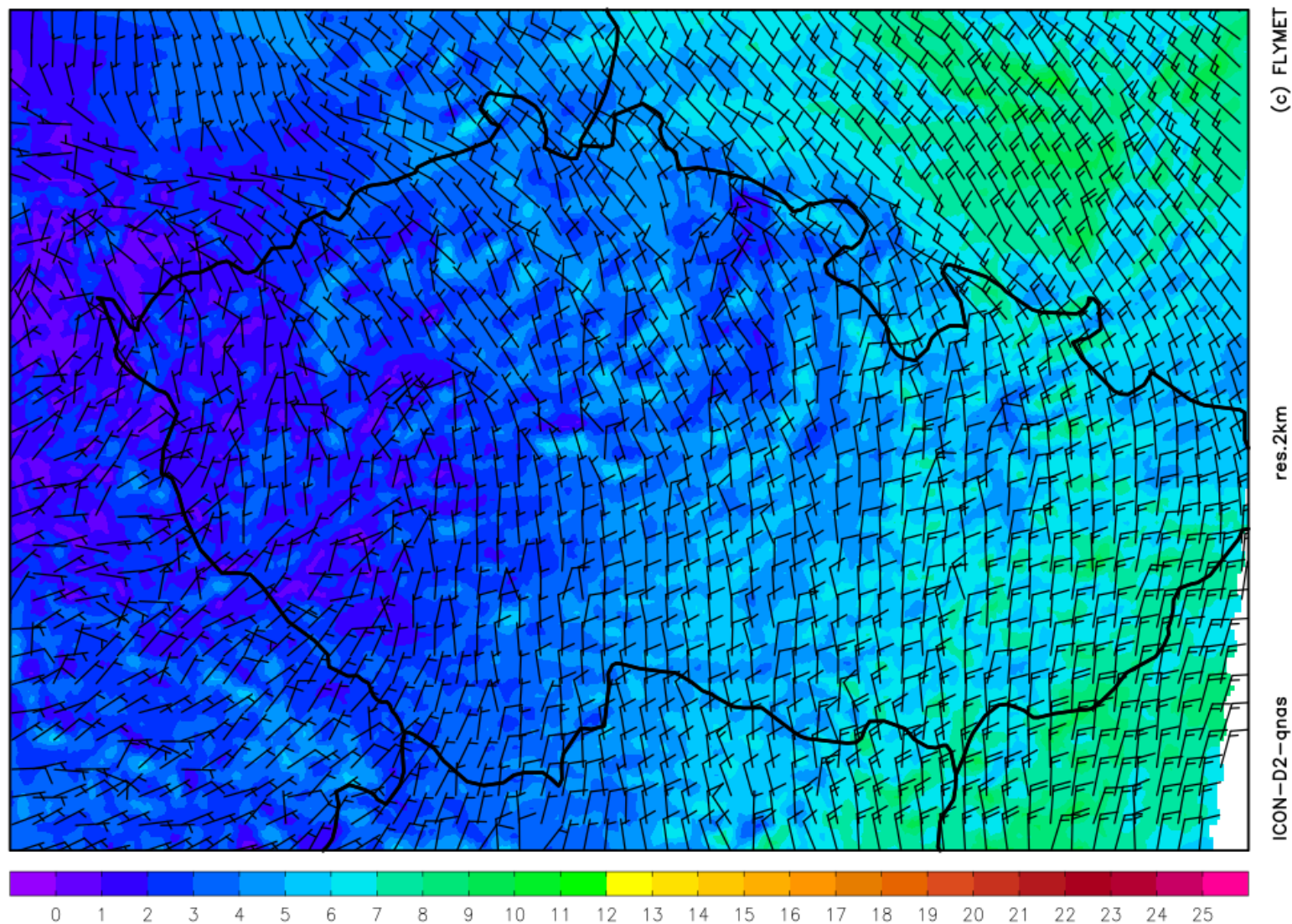
tuesday 17.06. 2025 12:00 utc



WEATHER

wind 1500 m [m/s]

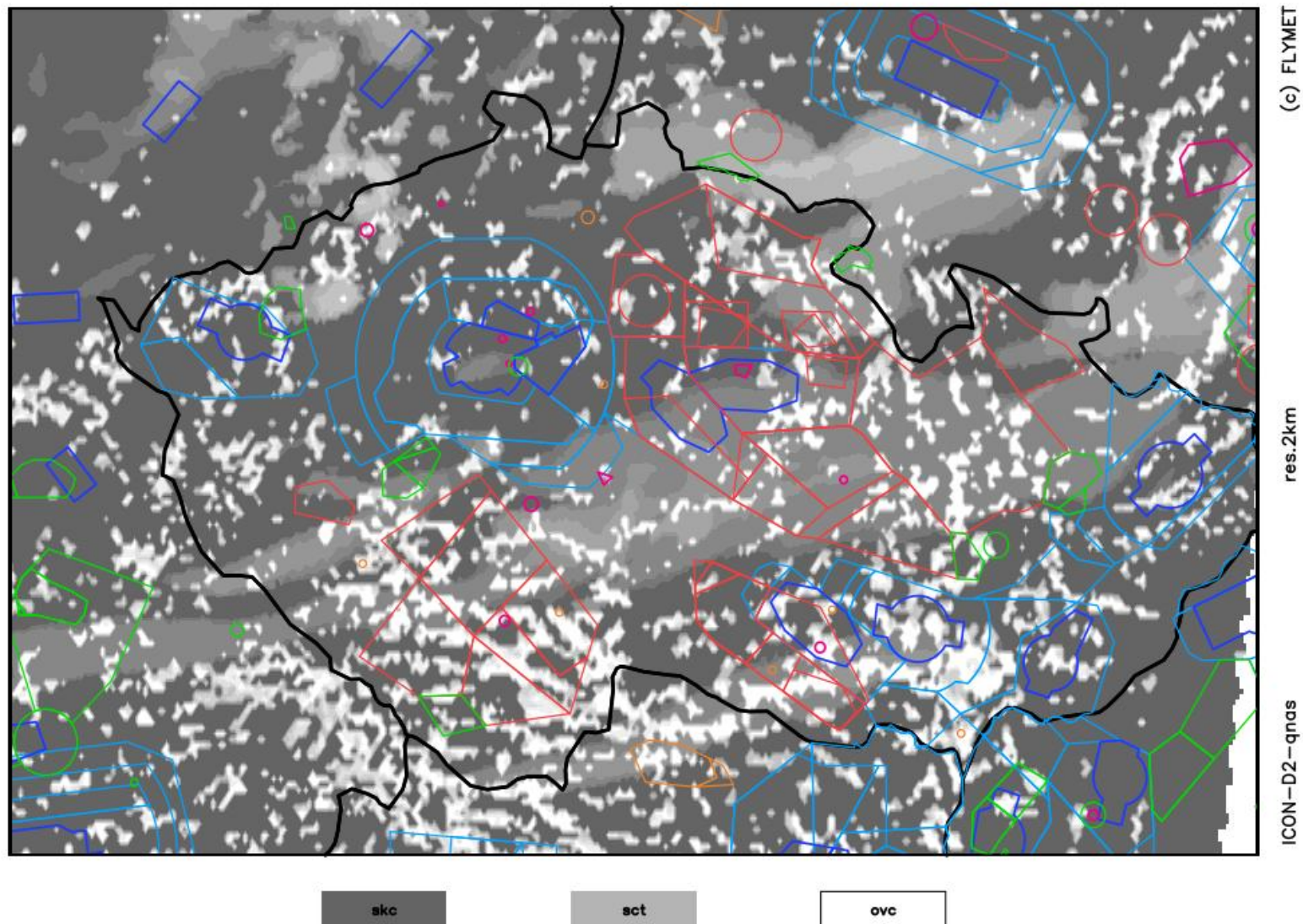
tuesday 17.06. 2025 12:00 utc



WEATHER

clouds

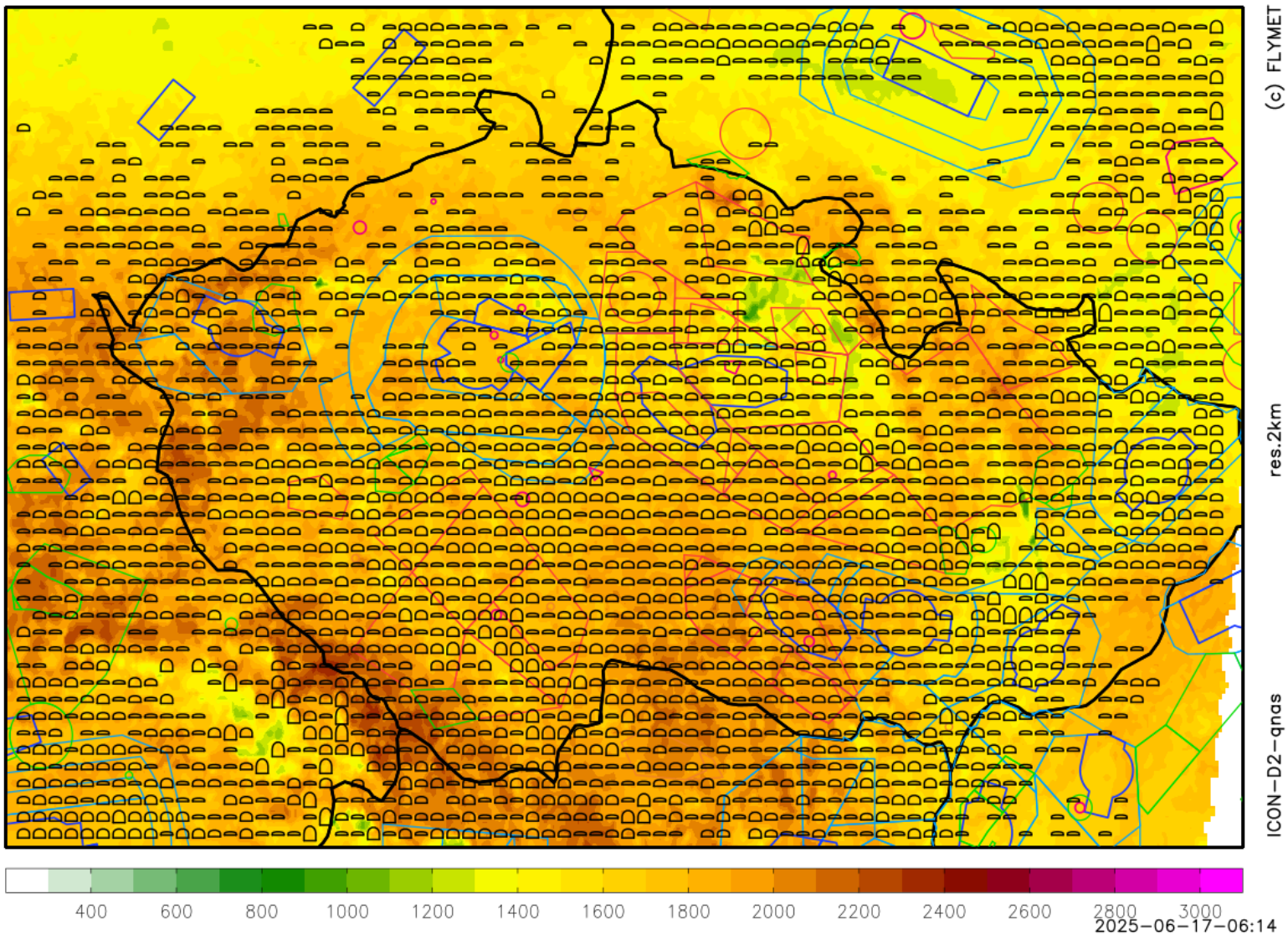
tuesday 17.06. 2025 14:00 utc



WEATHER

thermals blue + cumulus

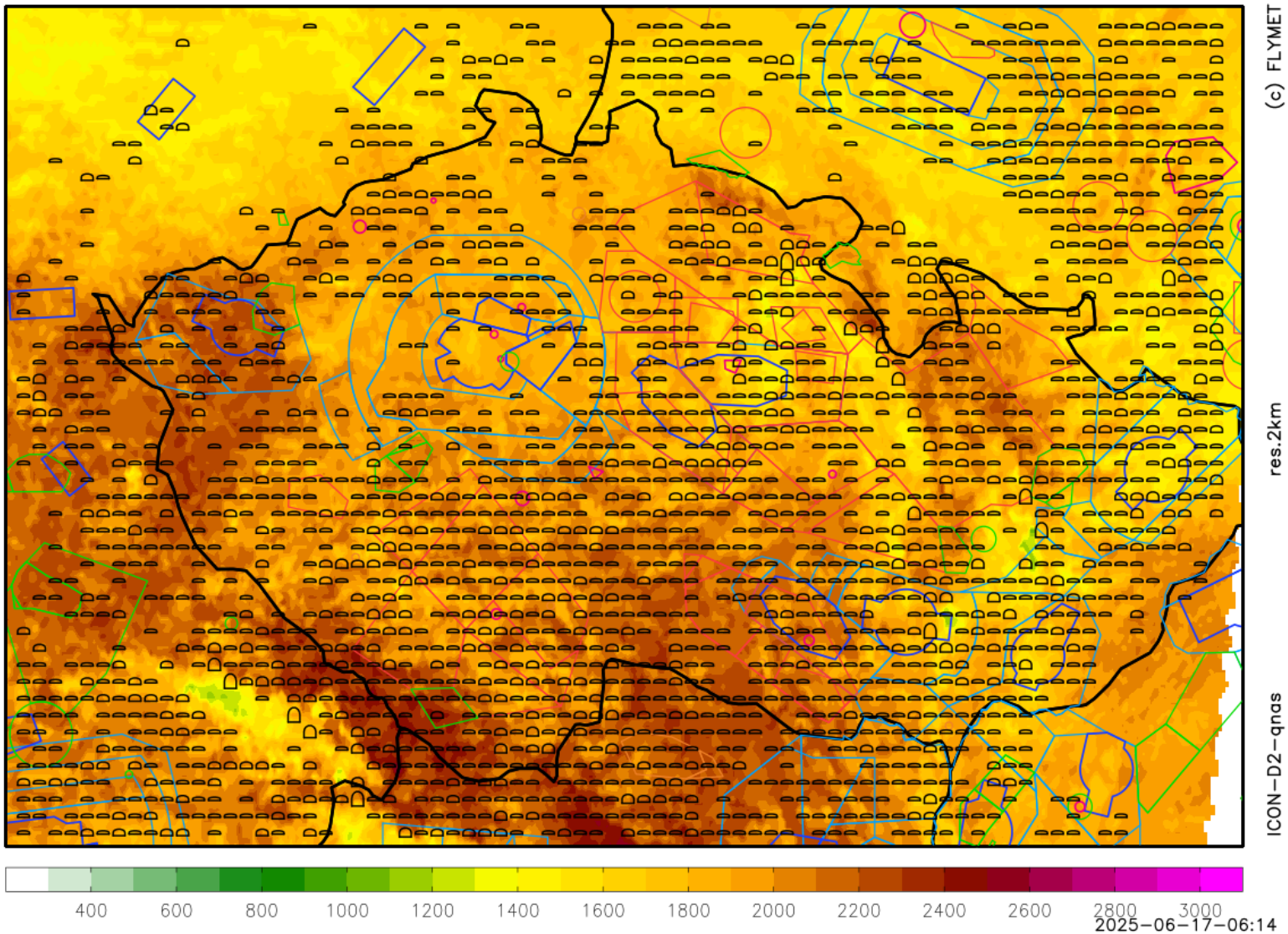
tuesday 17.06.2025 11:00utc



WEATHER

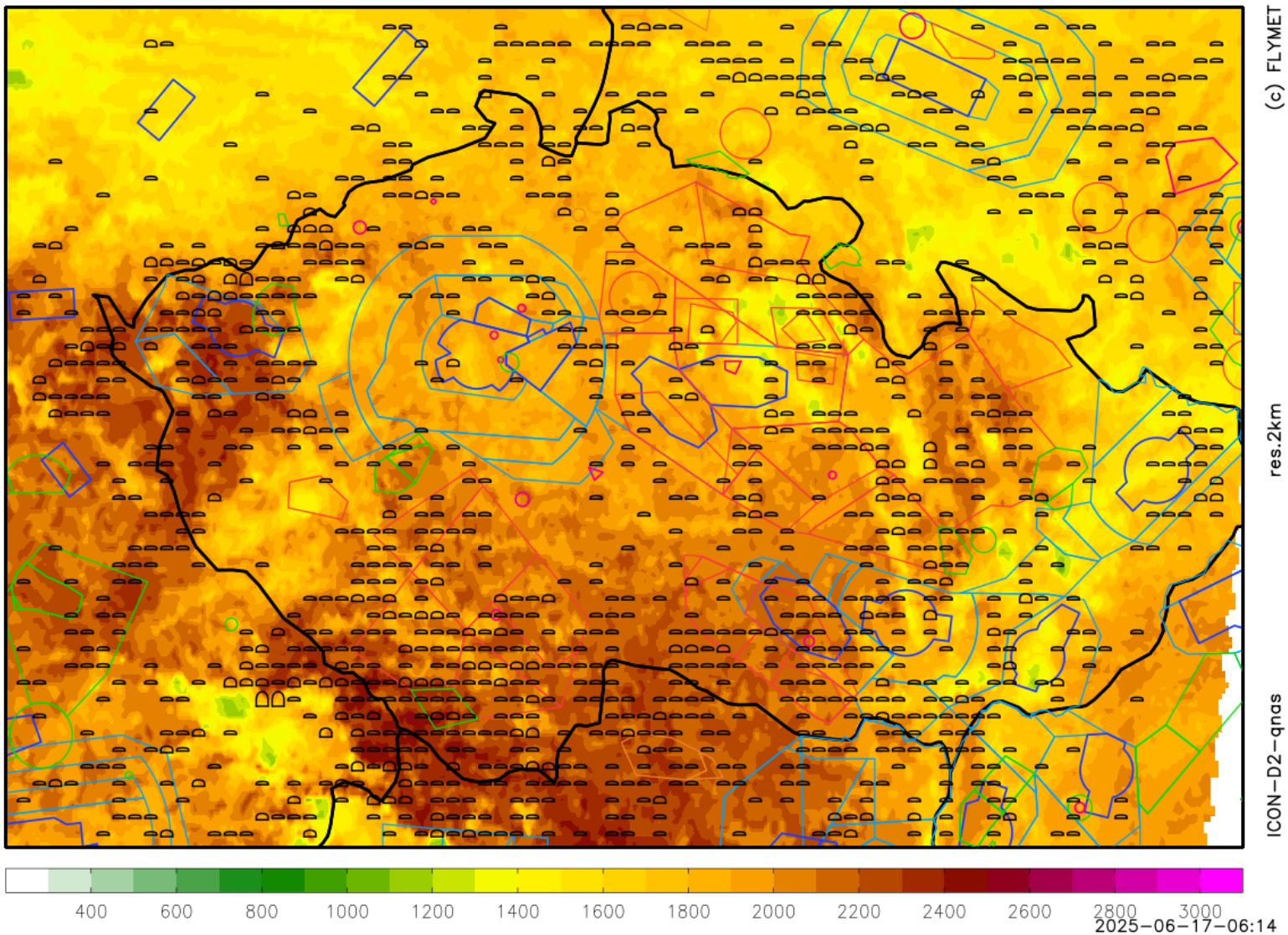
thermals blue + cumulus

tuesday 17.06.2025 13:00utc

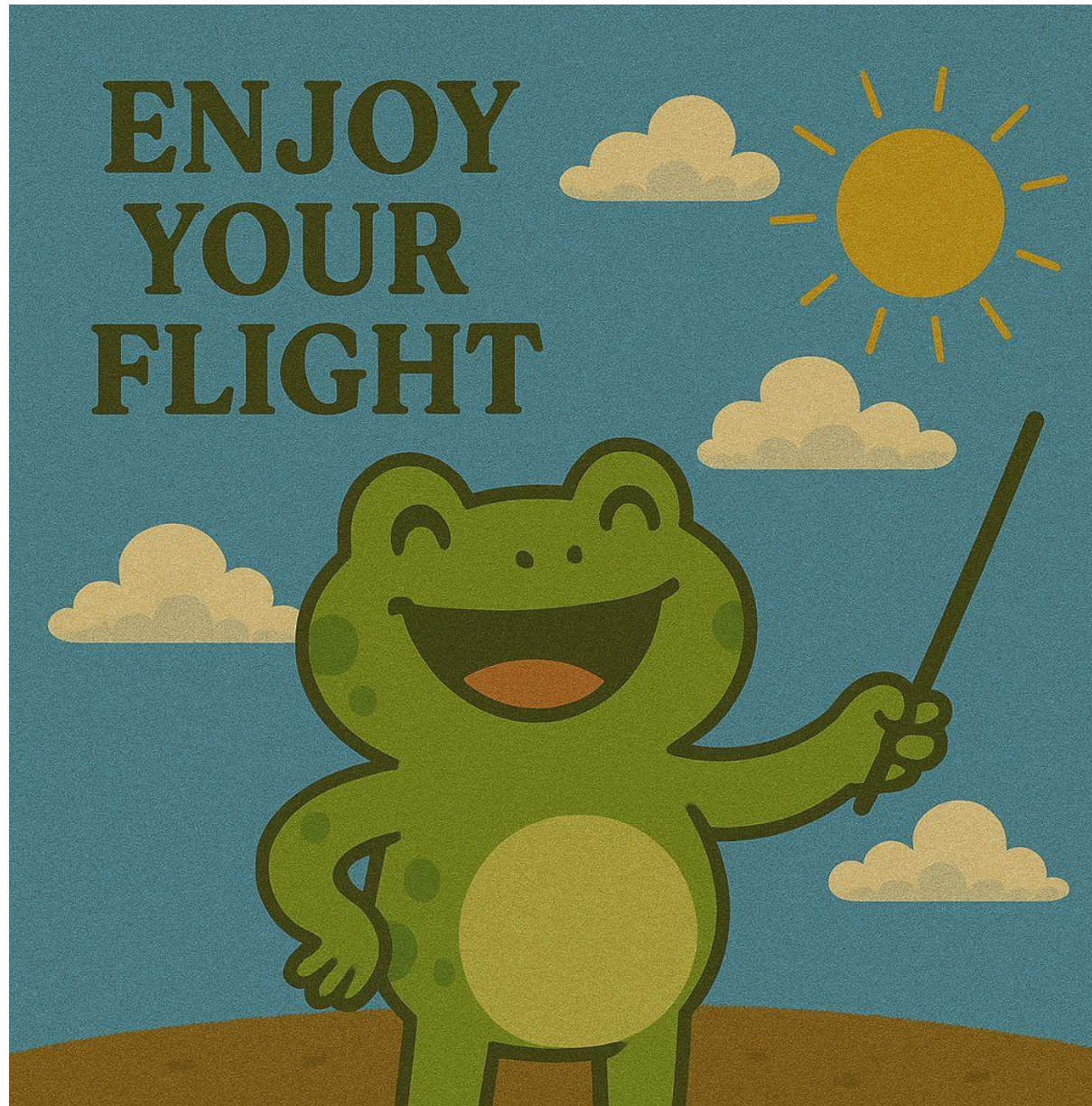


WEATHER

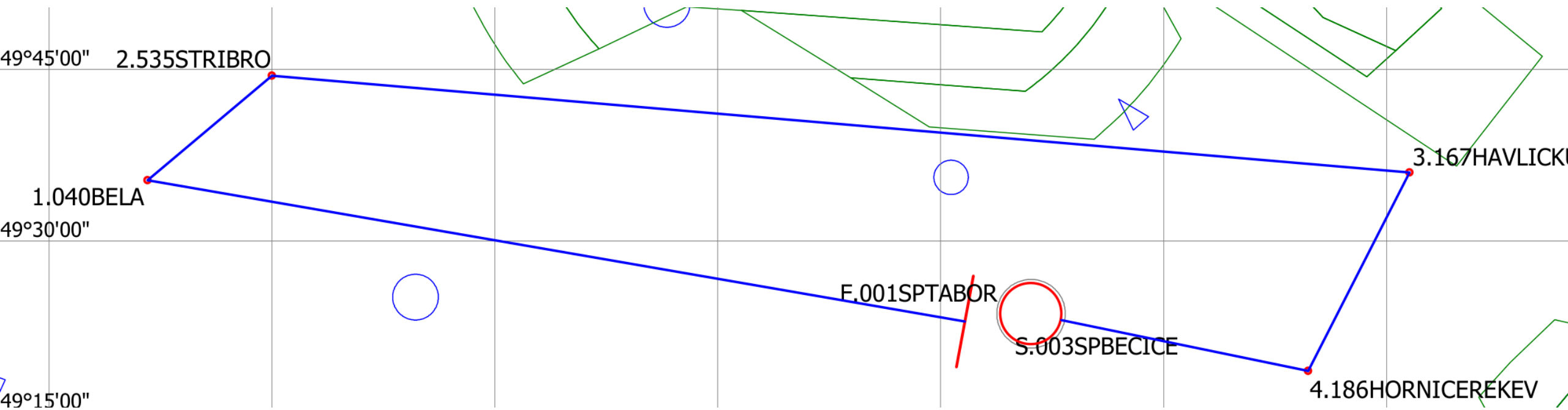
thermals blue + cumulus tuesday 17.06.2025 15:00utc



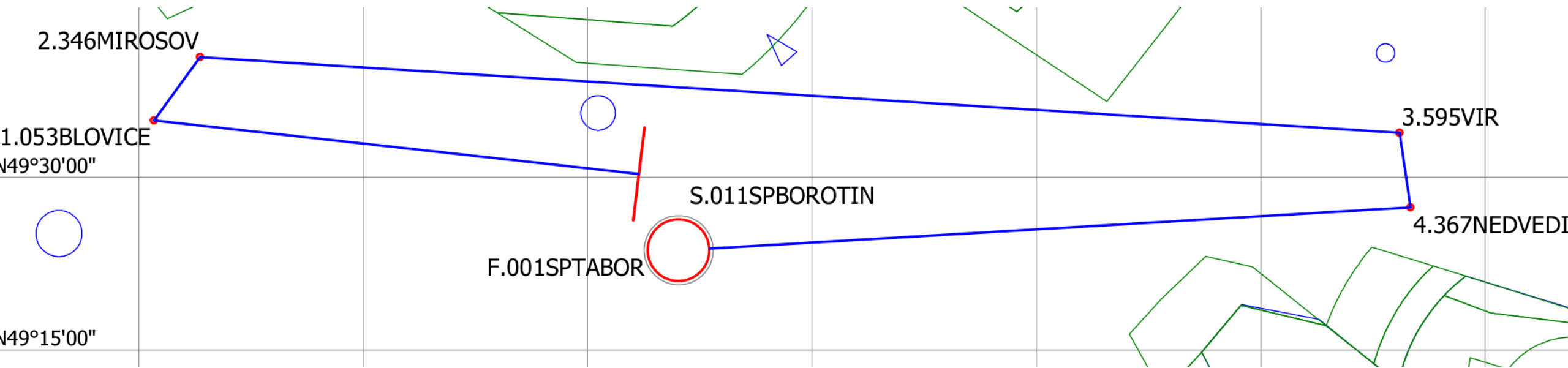
WEATHER



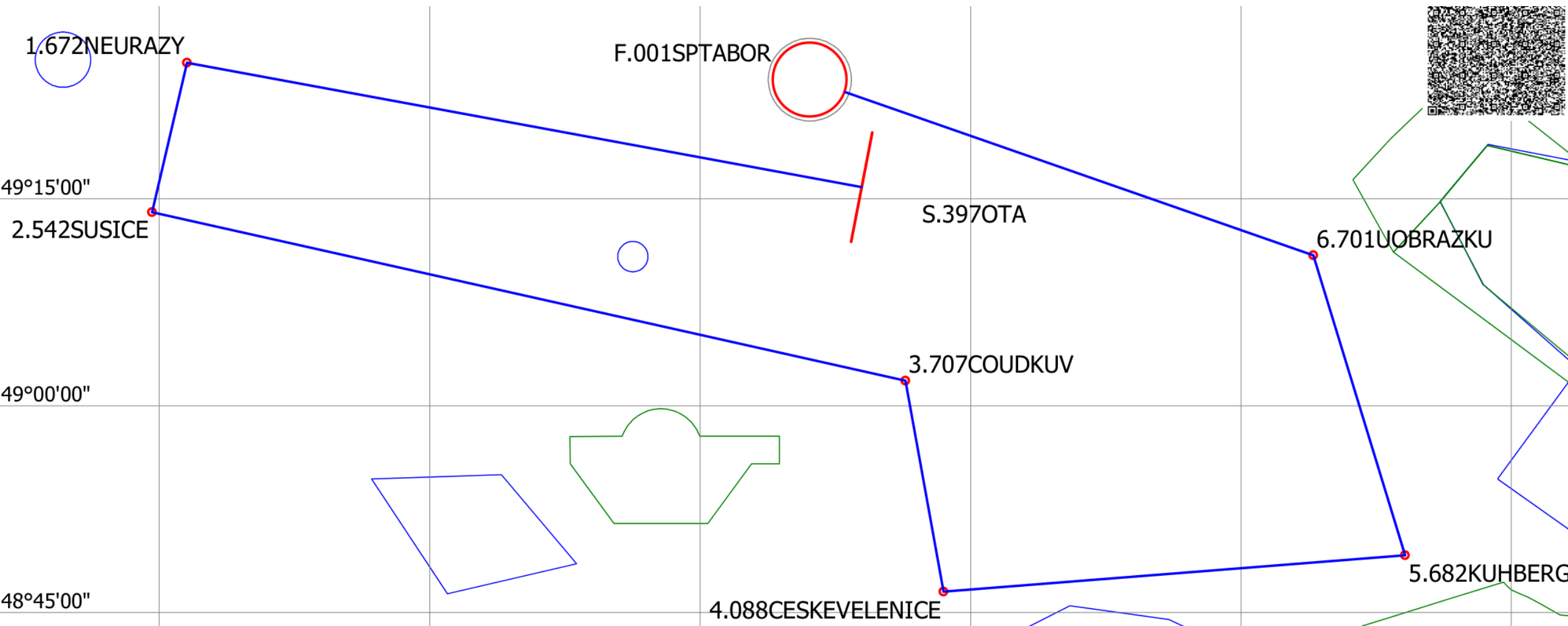
TASK FOR CLUB CLASS



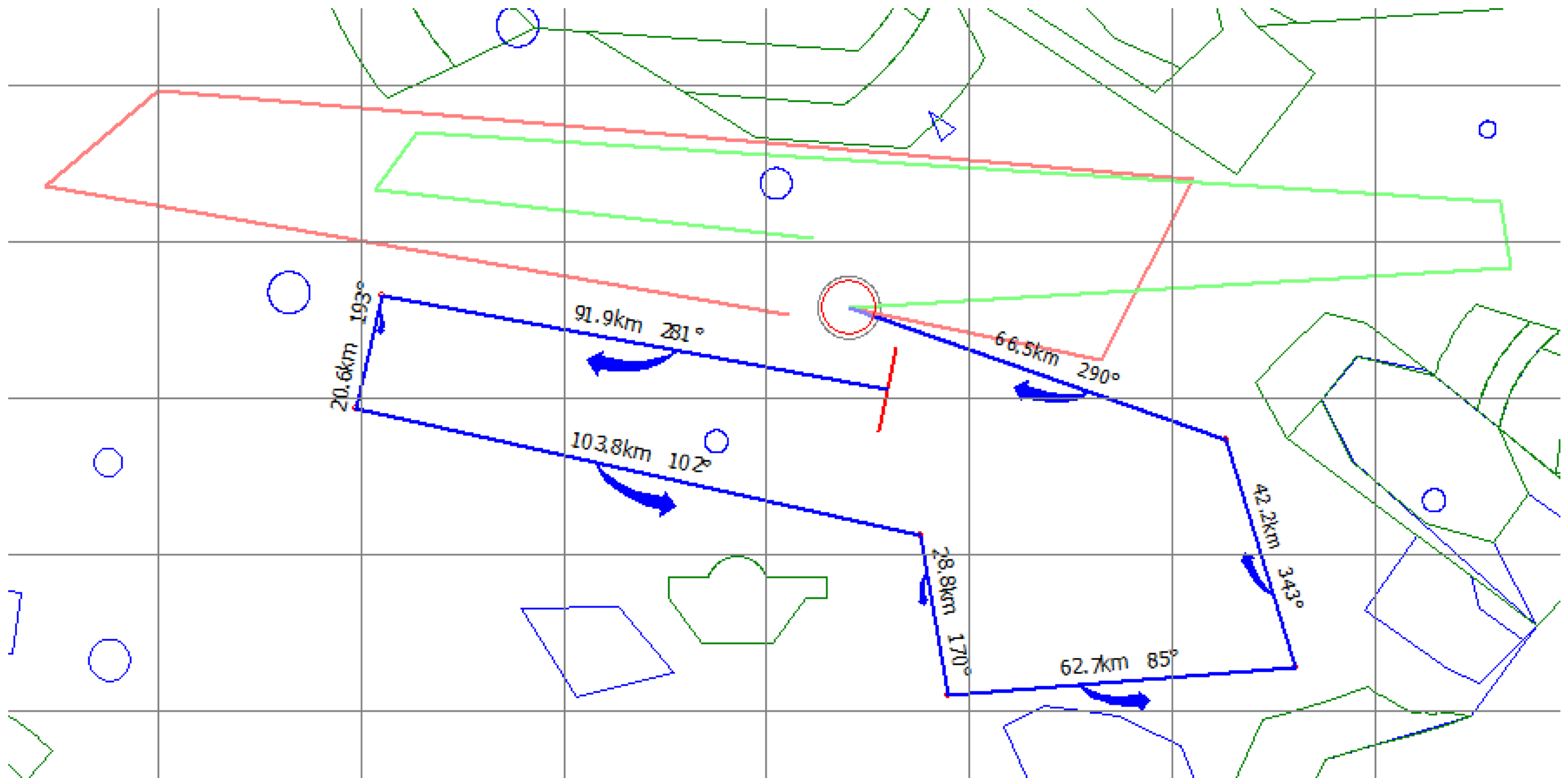
TASK FOR STANDARD CLASS



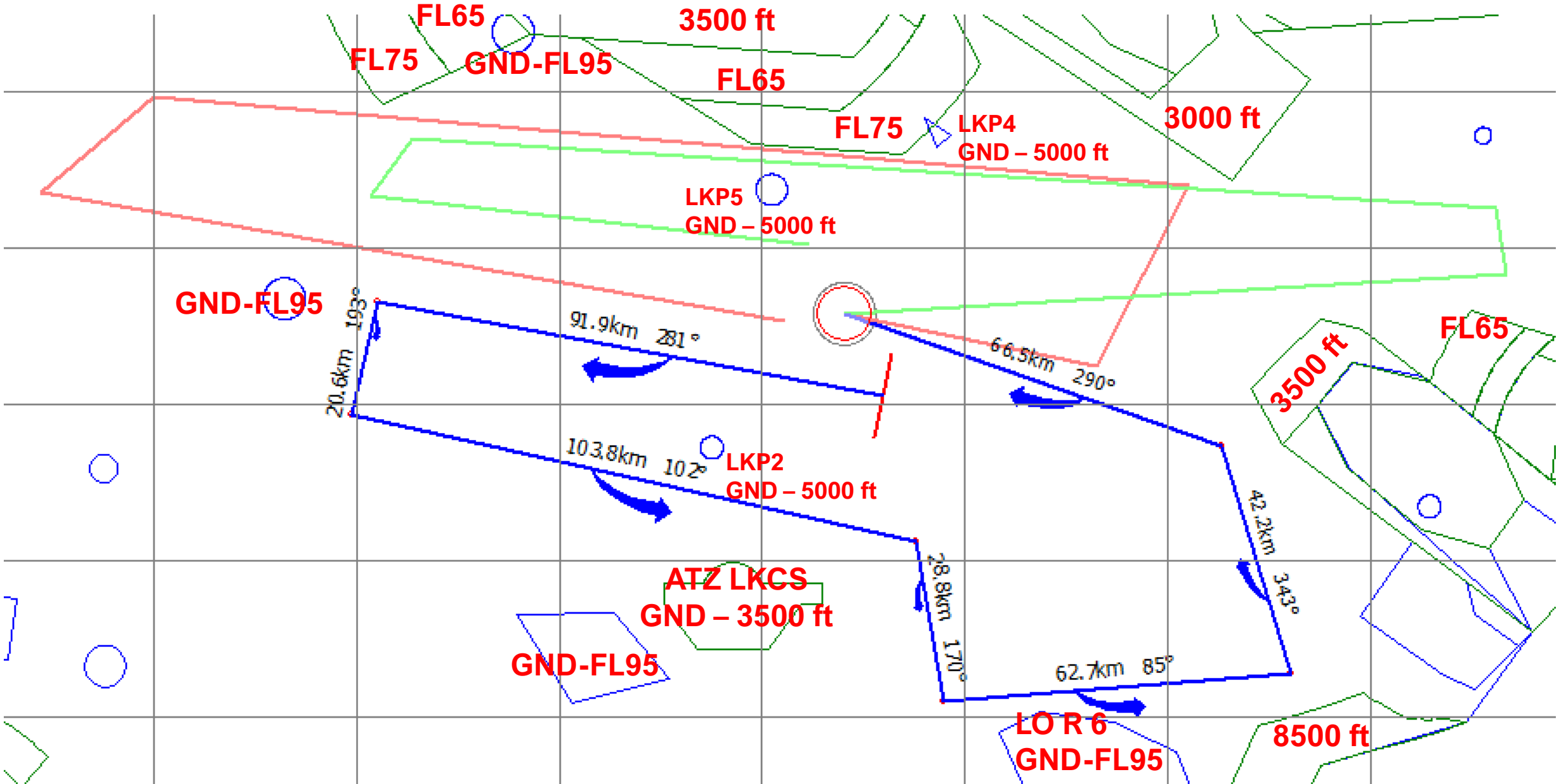
TASK FOR 15M CLASS



TASK OVERLAY

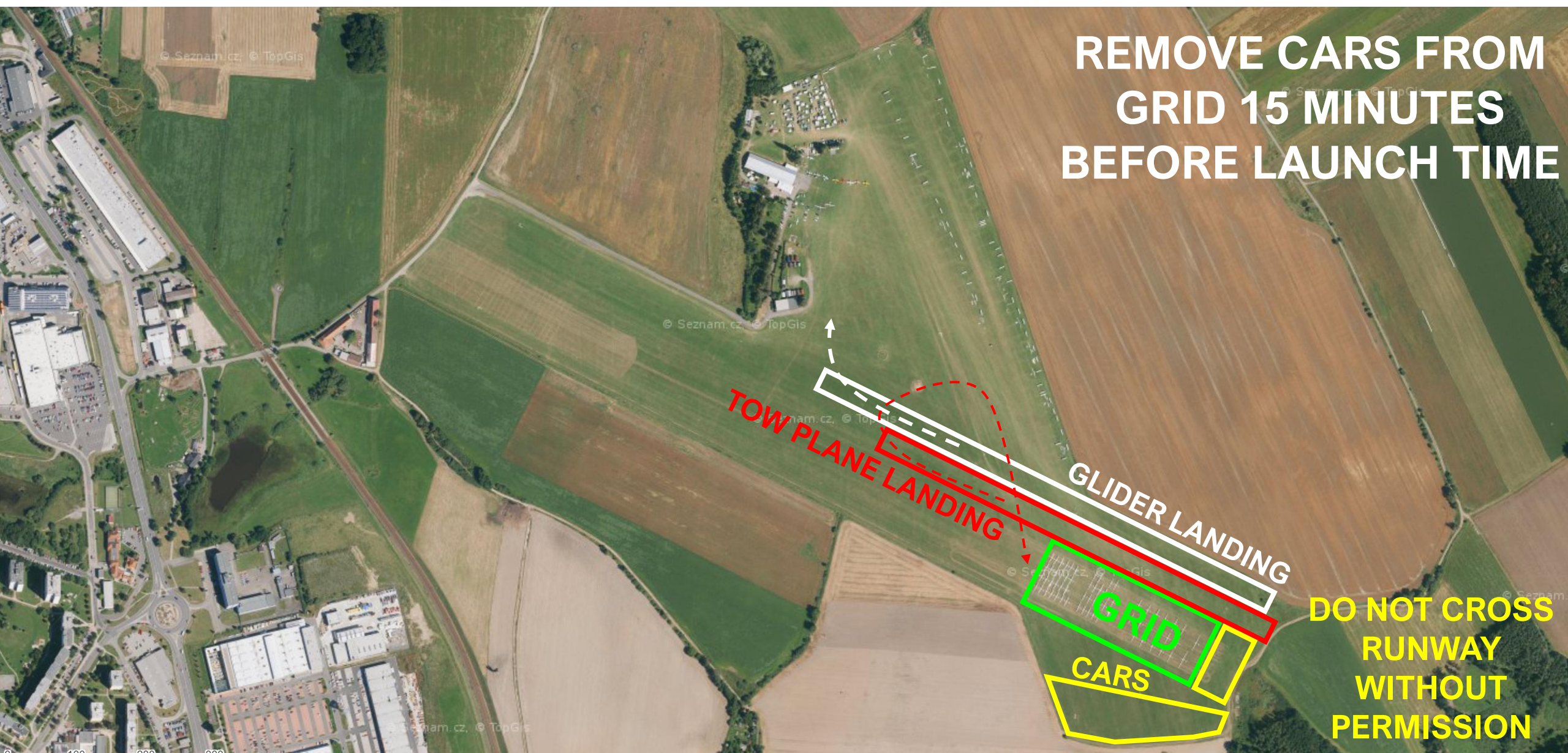


AIRSPACE



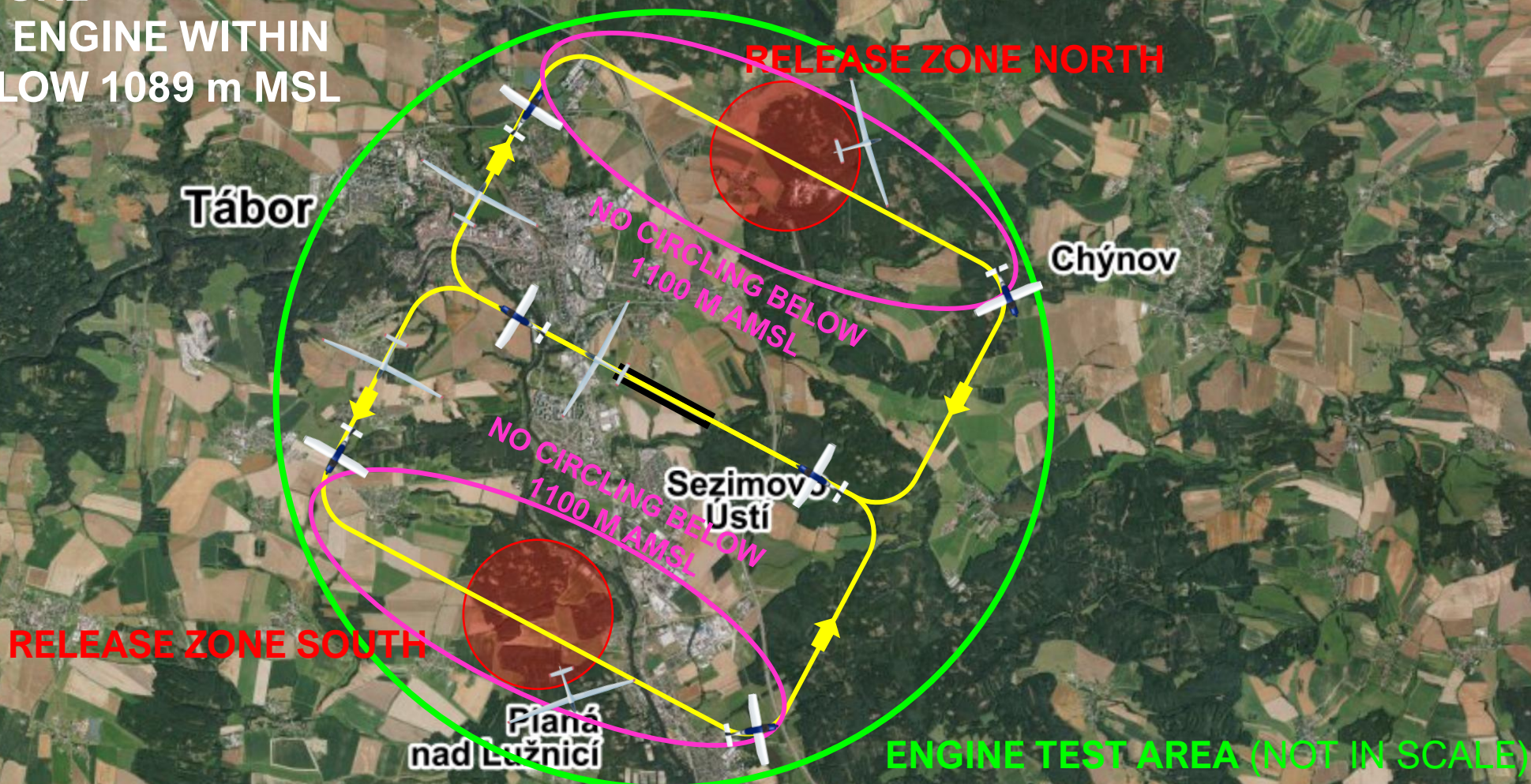
TAKE-OFF RWY 29

REMOVE CARS FROM
GRID 15 MINUTES
BEFORE LAUNCH TIME



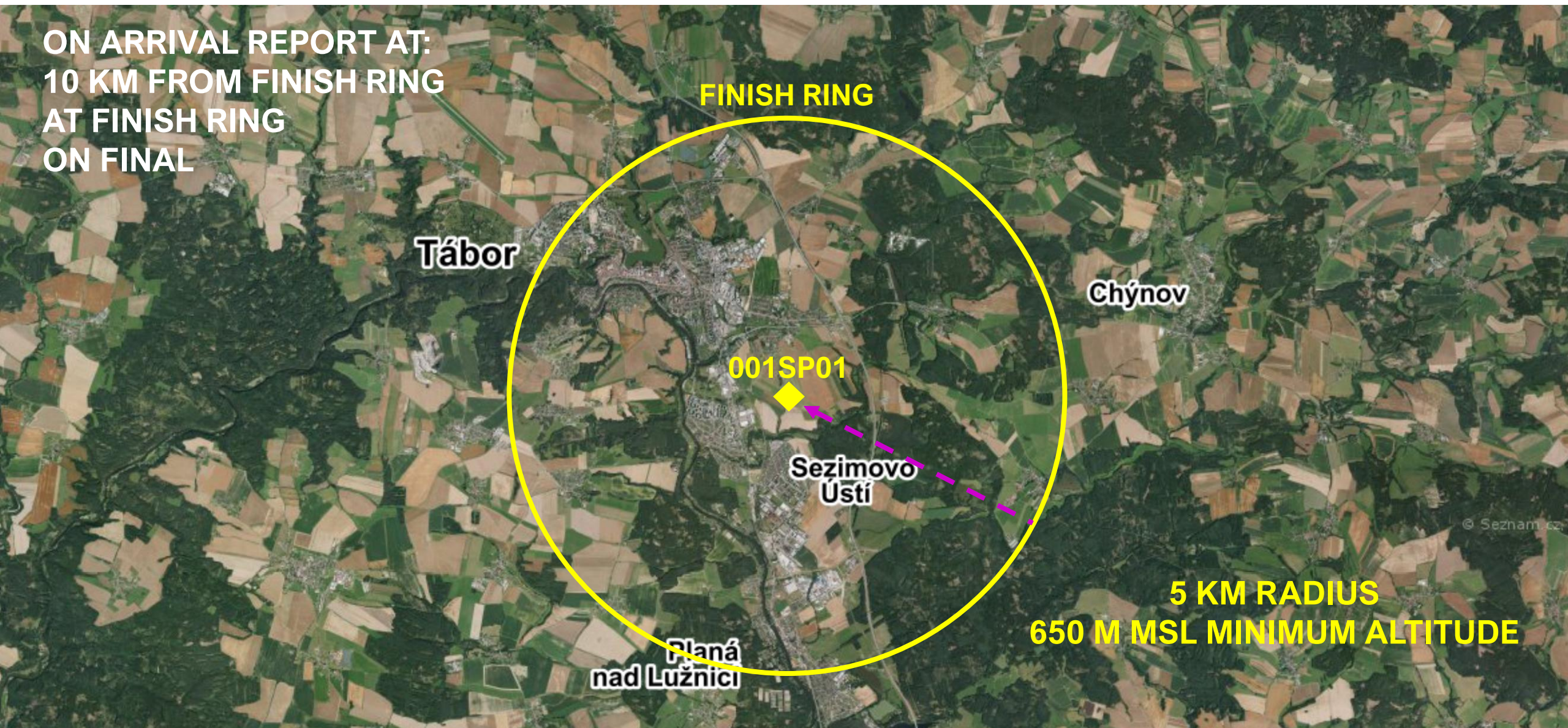
AEROTOWS RWY 29

FOR SELF-LAUNCH FOLLOW
SAME PROCEDURE
TURN OFF THE ENGINE WITHIN
TEST AREA BELOW 1089 m MSL

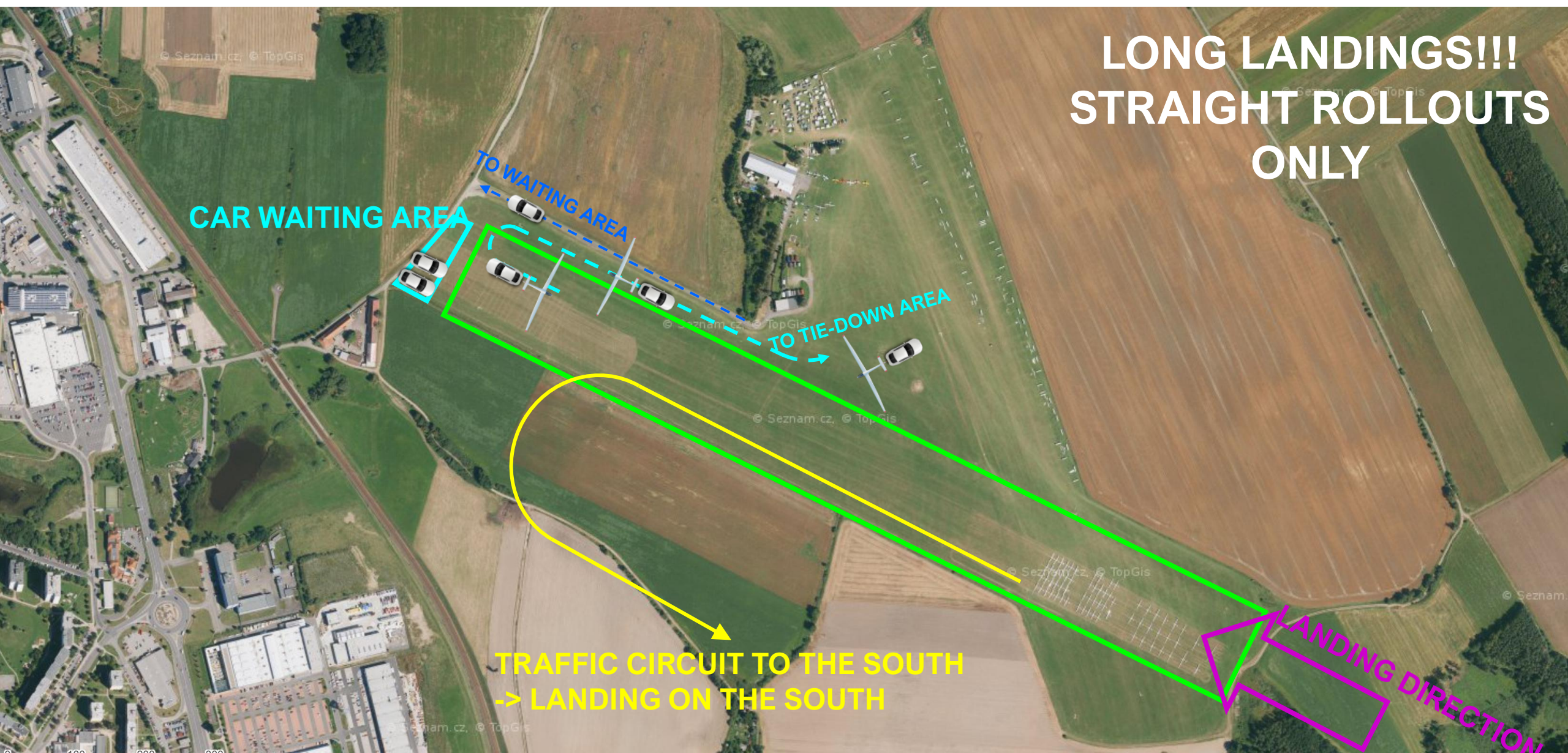


FINISH RWY 29

ON ARRIVAL REPORT AT:
10 KM FROM FINISH RING
AT FINISH RING
ON FINAL



LANDING RWY 29



ENERGY CONTROL

- MAXIMUM START ALTITUDE

Not in use today

- MAXIMUM START GROUND SPEED

Not in use today

PRE-START ALTITUDE LIMIT

— PRE-START ALTITUDE LIMIT

Not in use today

PEV START PROCEDURE

— PEV WAIT TIME

10 MINUTES

— PEV START WINDOW

5 MINUTES

— MAXIMUM NUMBER OF STARTS: 3

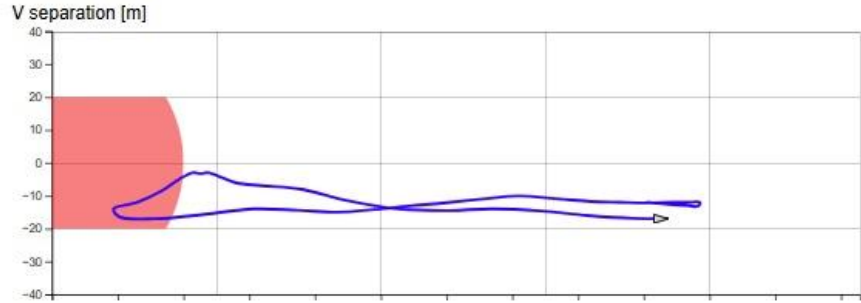
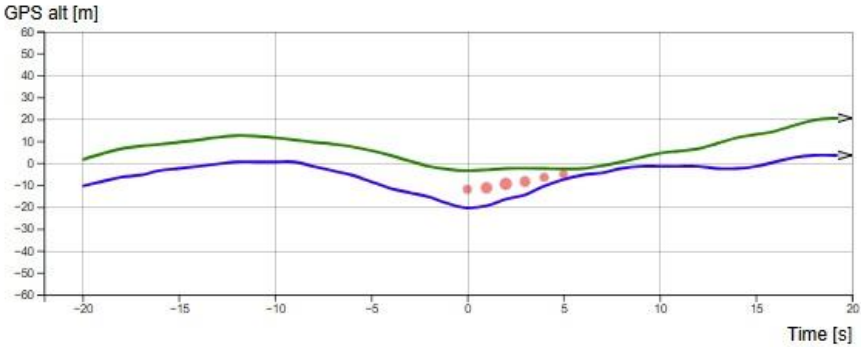
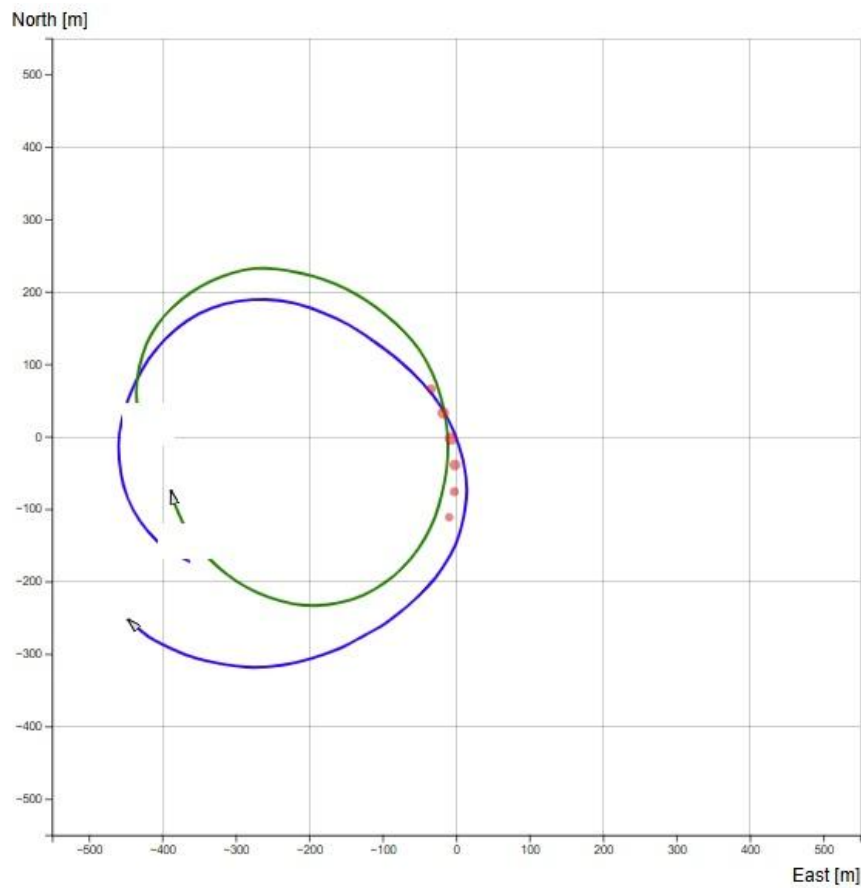
START LINE OPENING

- START LINE WILL OPEN 30 MINUTES AFTER
LAST LAUNCH IN CLASS

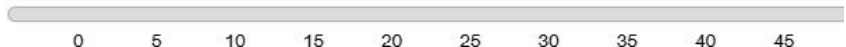
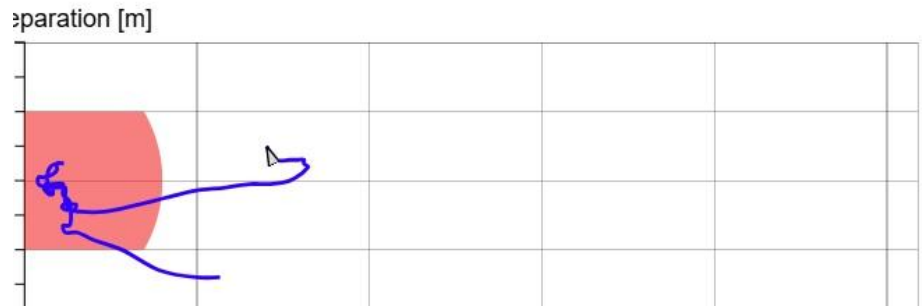
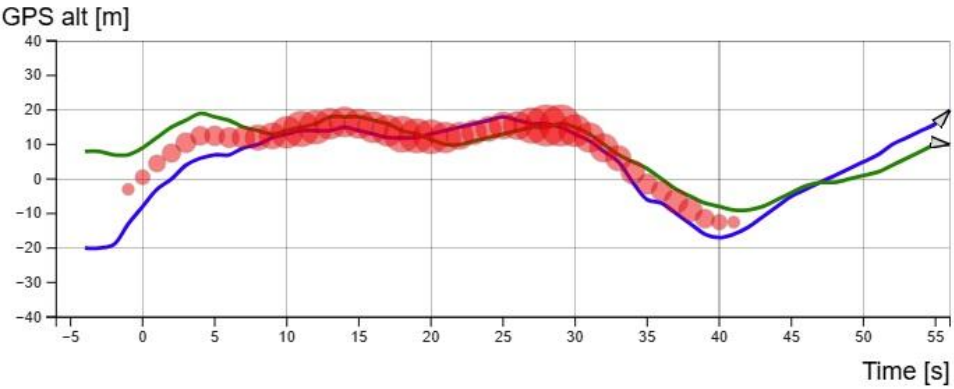
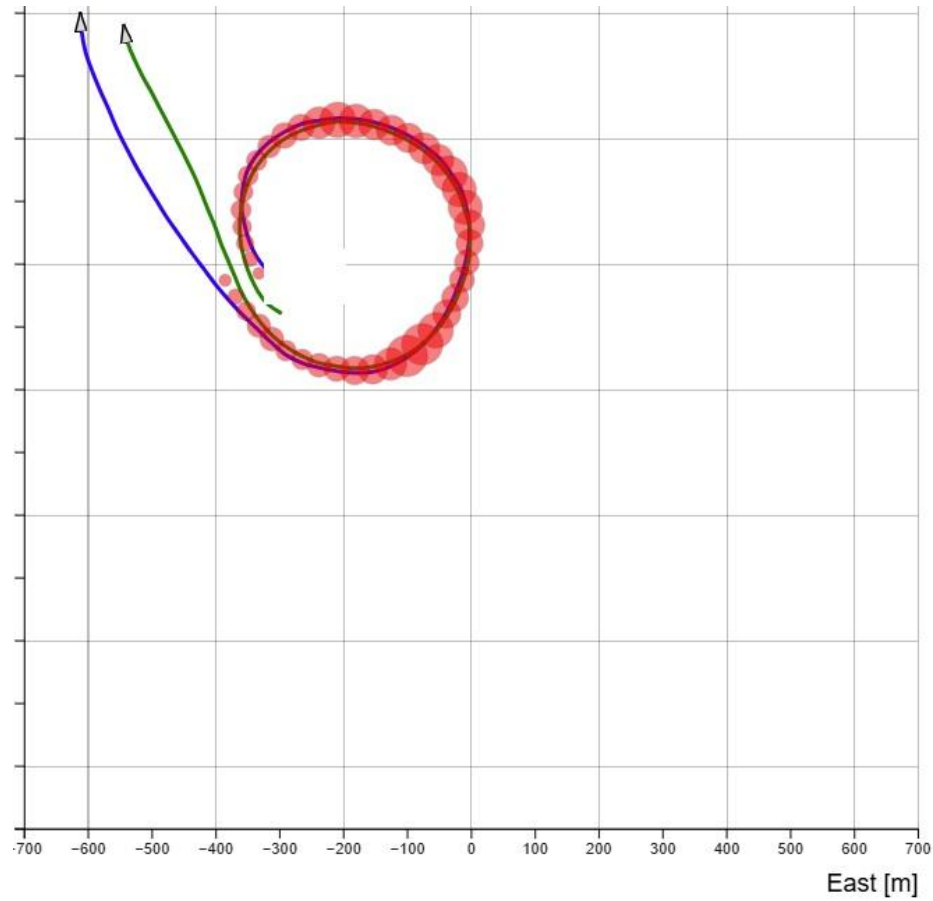
IGC FILE DELIVERY

- SEND ALL FILES TO IGC@POHODA.COM
- **45 MINUTES FOR FILE DELIVERY**
- INCLUDE CN IN EMAIL SUBJECT
- ENSURE CORRECT FILE HEADER
- 1 SECOND FIX RATE

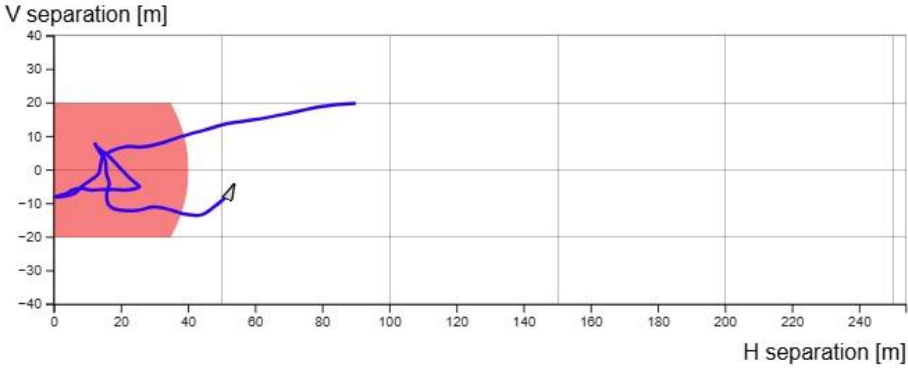
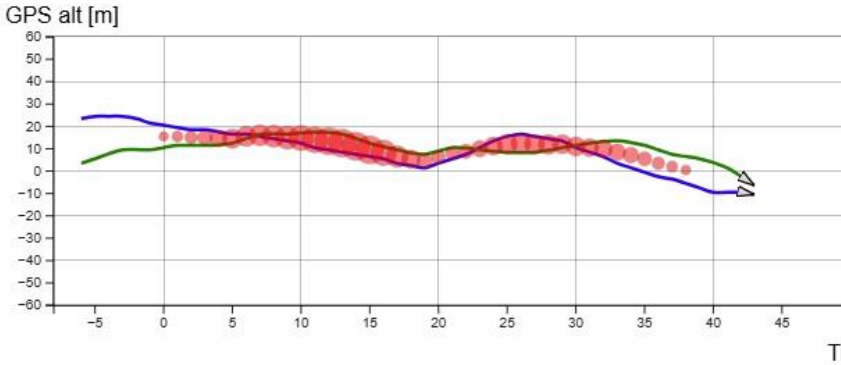
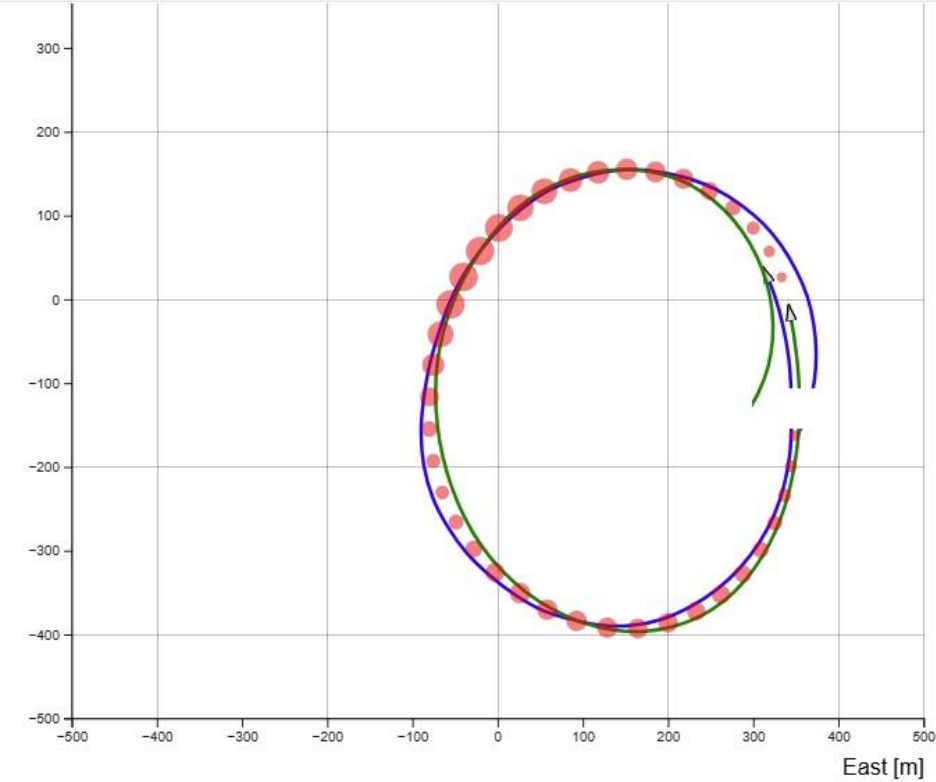
SAFETY



SAFETY



SAFETY



SAFETY

- LOOK OUT, LOOK OUT, LOOK OUT
- STAY HYDRATED
- FLY SAFE

INFORMATION FOR TODAY

- RUNWAY IN USE TODAY: **29**
- FIRST LAUNCH: **11:00**
- TASK A IS VALID



Jihočeský kraj



eclipse.



Air Navigation Services
of the Czech Republic



Cred0.

SKUPINA
GW JIHOTRANS



NOBIS GROUP
WWW.AGROPANEL.CZ

ma dona
Zpracování PUR a PE pěn